



## Technical characteristics

### SilEnd

4"	H= 70	H= 100	H= 150
6"	H= 65	H= 100	H= 200
8"	H= 70	H= 100	H= 200
10"	H= 100		

### SilHose

DN 80-100-150-200-250

### SilCap

DN 80-100-200-250-300

## SILICONE ACCESSORIES

**SilHose** is a flexible hose which connects two pieces of machinery when the use of rigid pipes is not possible where vibrations, vacuum or light over-pressures are to be expected. It is ideal in the case of non-alignment, or when deviations are necessary. **SilHose** is fastened with a clamp band which is easily opened when **SilHose** is to be sterilized. **SilHose** is made of a polyethylene netting completed coated with transparent silicone, in compliance with American regulations F.D.A. (CFR177 § 2600).

It is also available in an antistatic version to prevent powder sticking to the hose. It can handle temperature which range from -20°C to 200°C (dry). **SilCap** is a silicone cover which protects the vane of the valve from contamination and knocks. It is simple to use, as a clamp is not required to fasten it.

The operator simply fits the cap over the part to be protected.

The **SilCap** is available in transparent Silicone or FKM (Viton®) or EPDM. The standard version, in silicone, can handle temperatures which range from -20°C to 200°C (dry). All the elastomers are in compliance with the F.D.A. (CFR177 § 2600). It can be used, not only as a cover, but as a component which creates a "Dust Free Connection", thus preventing dust clouds.

**SilEnd** is a unique and flexible connecting element, with two tri-clamp interfaces, in compliance with British standards. It can be easily installed and sterilized. An operation needs only TC clamps to do the installation.

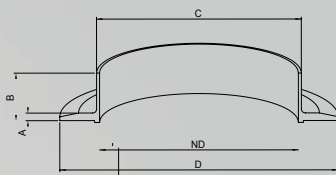
The **SilEnd** is used in those processes where vibrations, vacuum or light overpressures present themselves, and in those systems where non-alignment occurs. This item is ideal for pharmaceutical use since it is shaped in such a way to ensure that there are no crevices or dead areas where deposits could form. The two stainless steel rings serve to protect the silicone when **SilEnd** is clamped to the TC ferrule. The flow of the product can be checked through the transparent silicone **SilEnd**. The **SilEnd** is available in transparent silicone or in alternative, FKM (Viton®), white EPDM or black EPDM if a conductive solution is requested. All the elastomers are in compliance with the F.D.A. (CFR177 § 2600).

The standard version, in silicone can handle temperature which range from -20°C to 200°C (dry). It is available in various diameters and heights.





### SteriFlange



ND	A	B	C	D
80	8	50	86	145
100	8	50	106	180
150	8	50	156	230
200	8	50	206	280
250	8	50	256	330
300	8	50	306	380
350	10	50	356	450
400	10	50	406	500

### SteriPlate

DN 3" - 4" - 6" - 8" - 10"

## STAINLESS STEEL ACCESSORIES

### SteriFlange

The **SteriFlange** is an interface component for the modular system valves. It has been designed to be welded on pipes or on machines in order to reduce the overall height and for a rapid and ergonomic clenching of the valve. The **SteriFlange** can come with an "O-ring" in silicone (FKM [Viton®], EPDM, PTFE are optional) which renders it airtight. It is in stainless steel EN 1.4404 (AISI 316L). Its height can be tailored to the customer's request. It has a high quality surface finish:

- Ra < 0,8 µm for the parts which are not in contact with the product (satin finish).
- Ra < 0,1 µm for the parts which are in contact with the product (mirror polished).



### Clamp

The **Clamp** is a rapid and ergonomic component for connecting valves and or accessories. We have two types of clamps, each with a different tightening element and both metrical or imperial. The Standard clamp is used to assemble and dismantle our SR, CR or DR valves, to clench them to our montage flange or to standard Tri-Clamp. In stainless steel EN 1.4301 (AISI 304), it is very light and easy to clean. The **SteriClamp** is a suitable solution for pharmaceutical use. It has the same advantage of the regular clamp and furthermore: it has an opened-fork lock without any threading which could harm the operator, damage latex gloves, and attract dust making cleaning more difficult. It is in stainless steel EN 1.4301 (AISI 304), it is very light and easy to clean and is closed with a simple gesture of the hand.



### SteriPlate

The **SteriPlate** is a cover which is clamped to the valve or the steriflange, to protect them from knocks and scratches.

The **SteriPlate** is provided with an "O-ring" in silicone (optional in FKM [Viton®], EPDM, PTFE) which renders it airtight. It is in stainless steel EN 1.4404 (AISI 316L), easily cleaned and dismantled without risk of damage. It has a high quality surface finish:

- Ra < 0,8 µm for the parts which are not in contact with the product (satin finish).
- Ra < 0,1µm for the parts which are in contact with the product (mirror polished).

